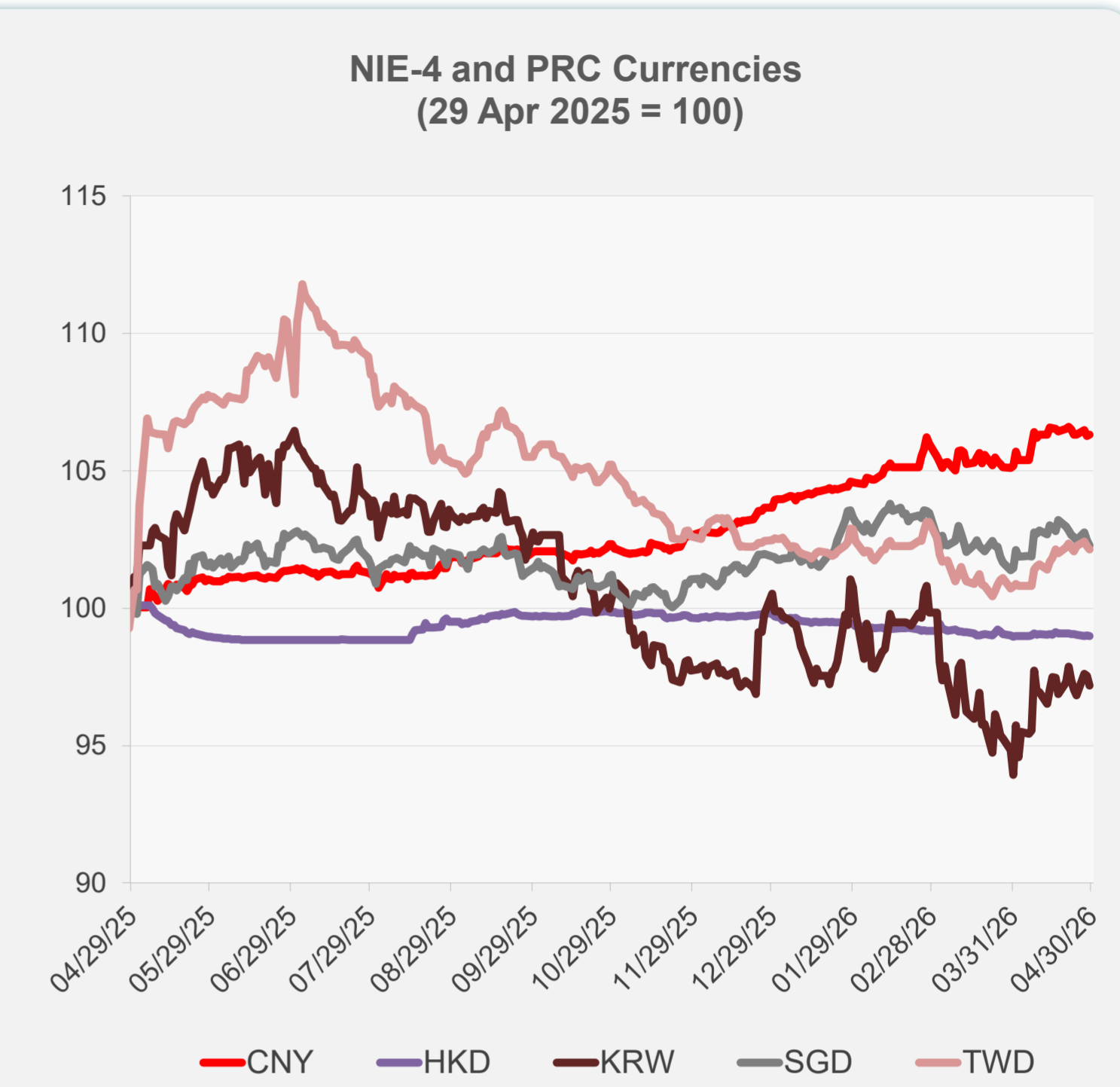
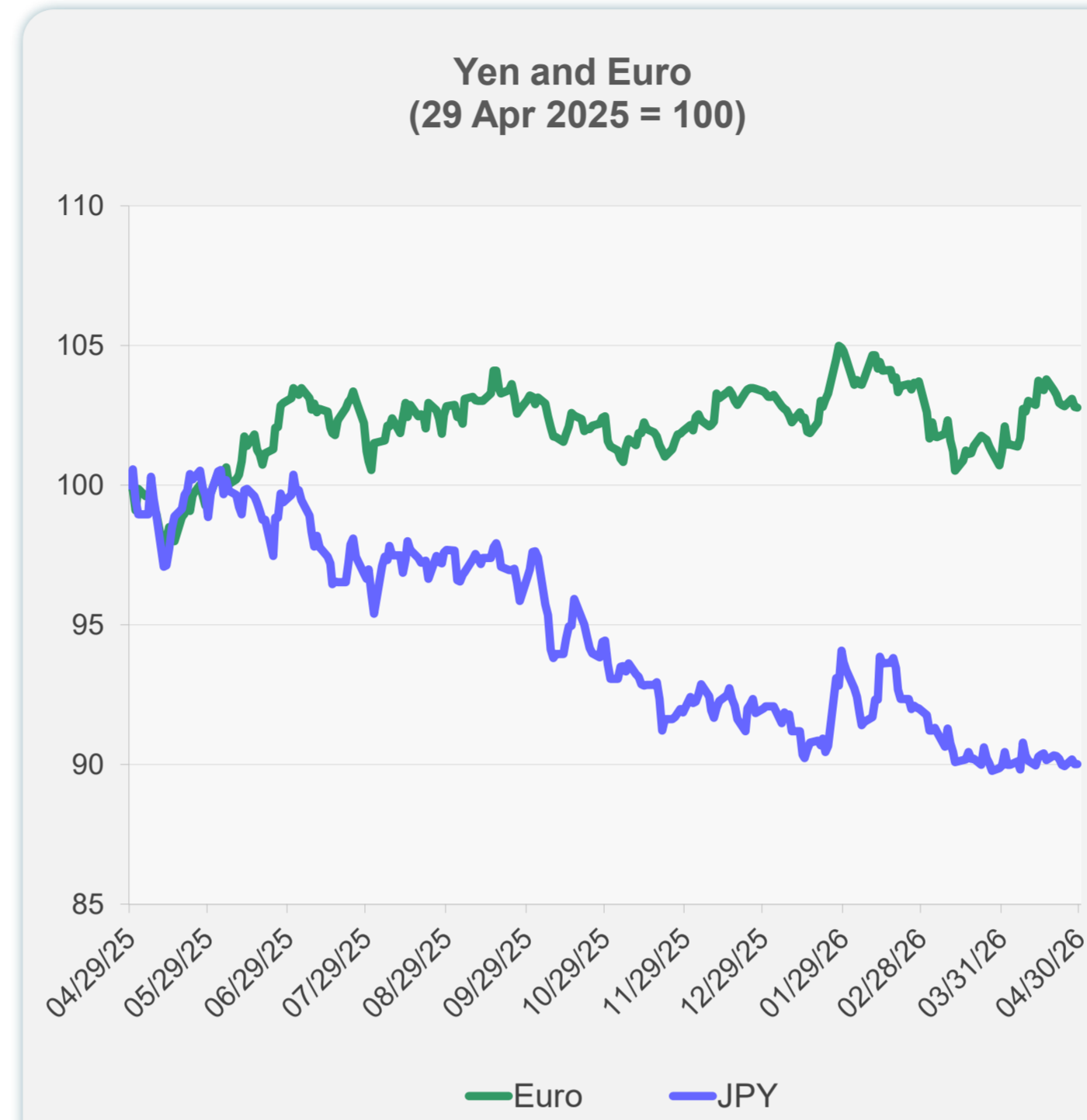
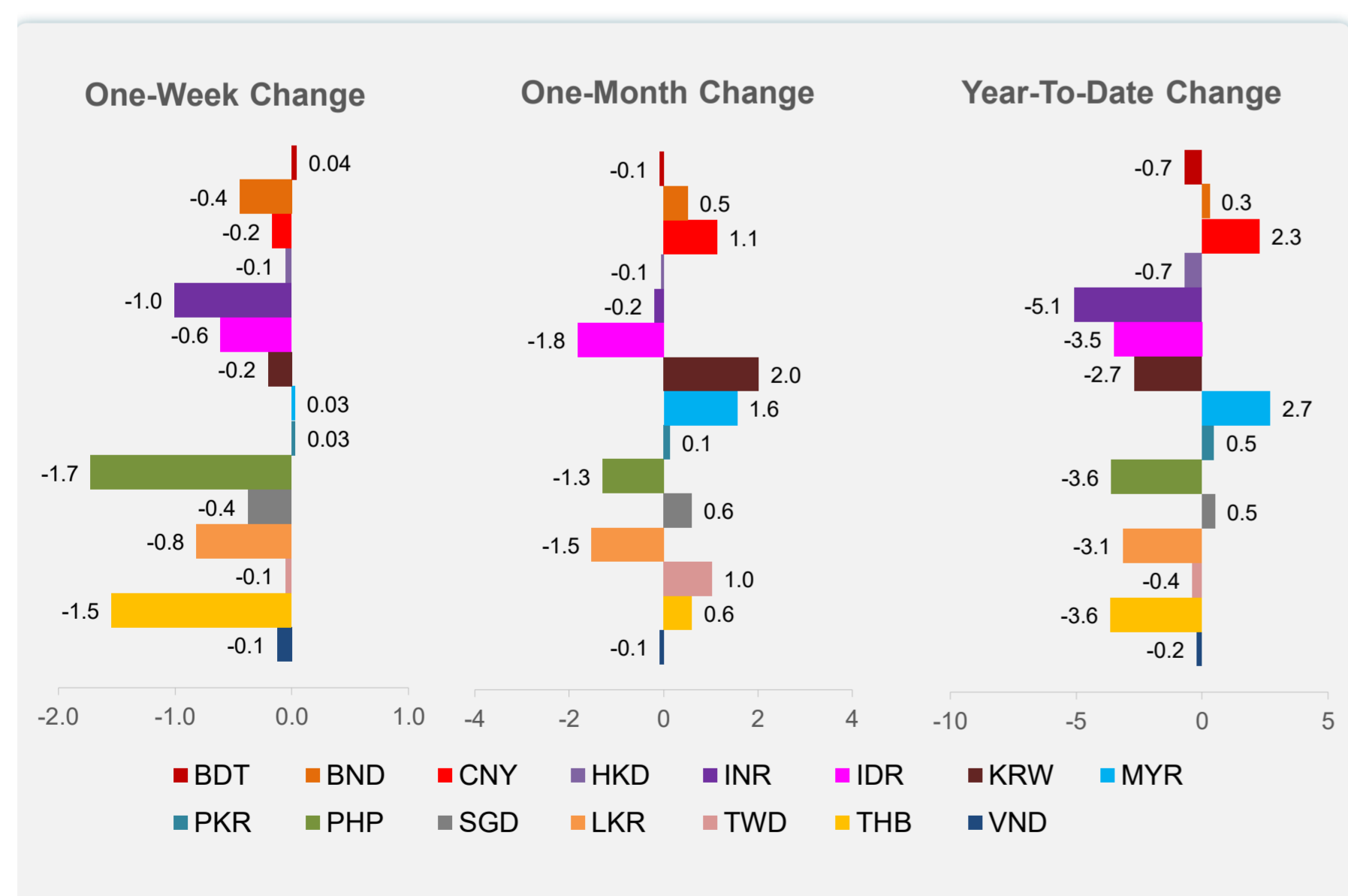
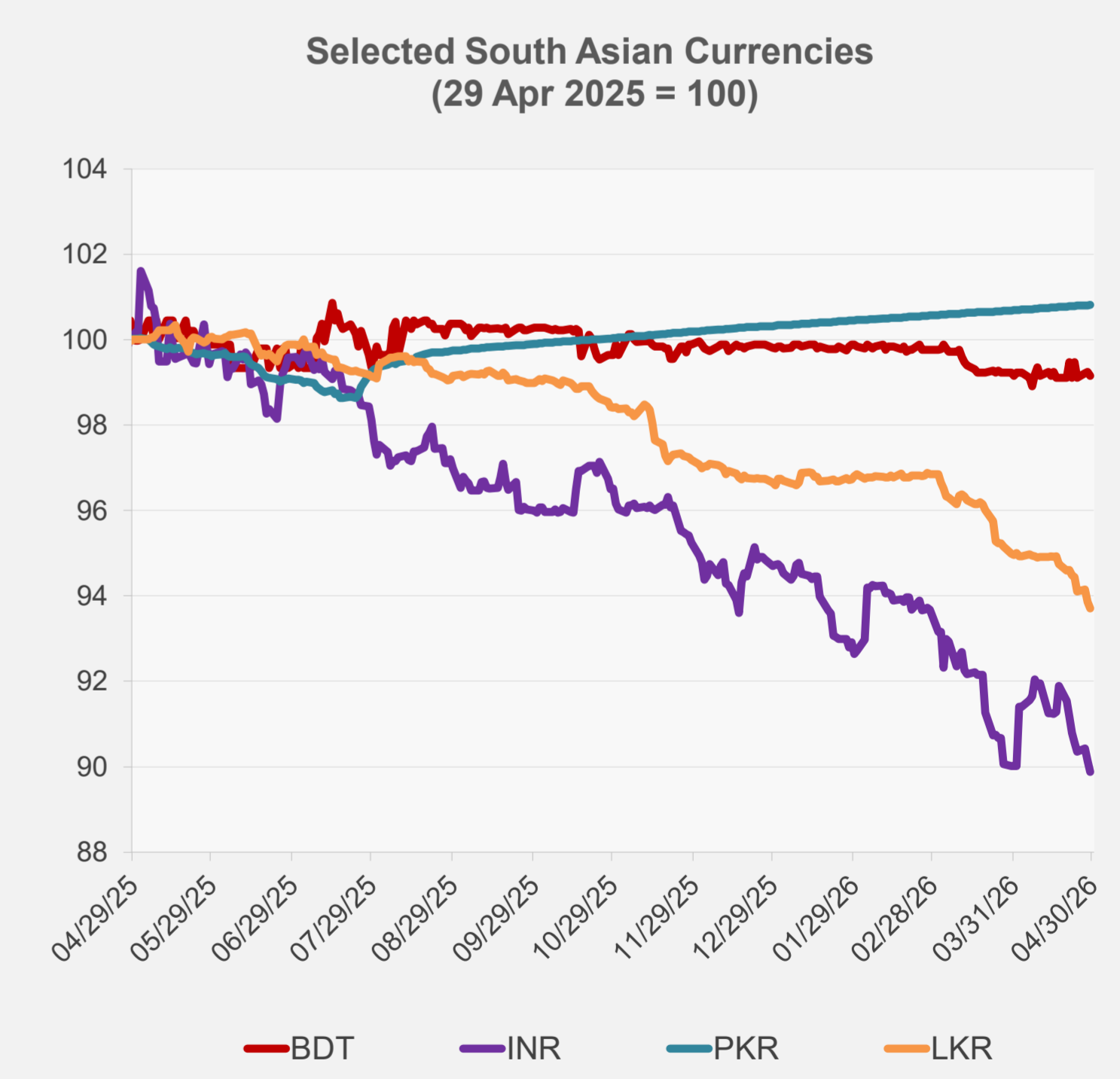
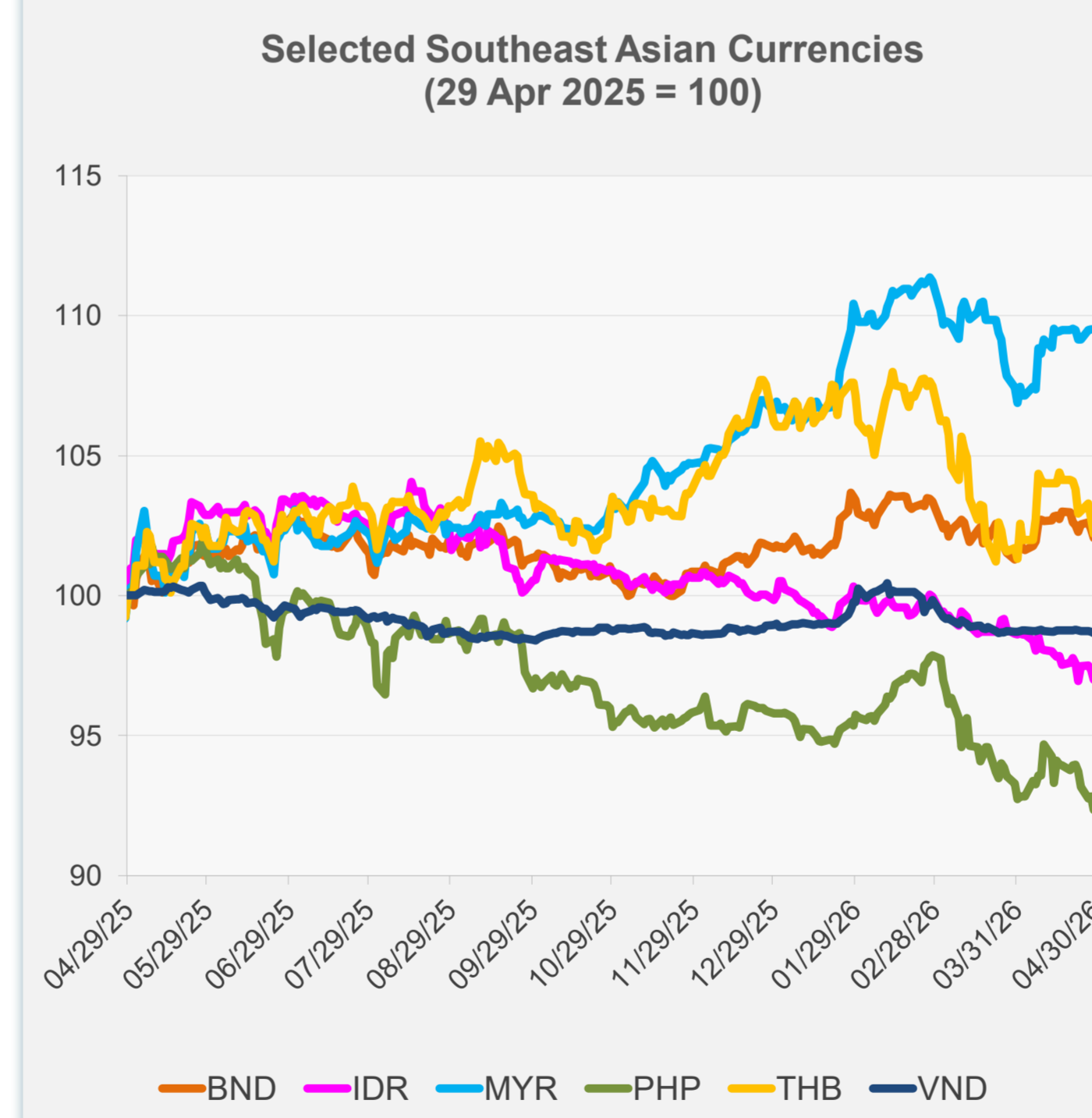


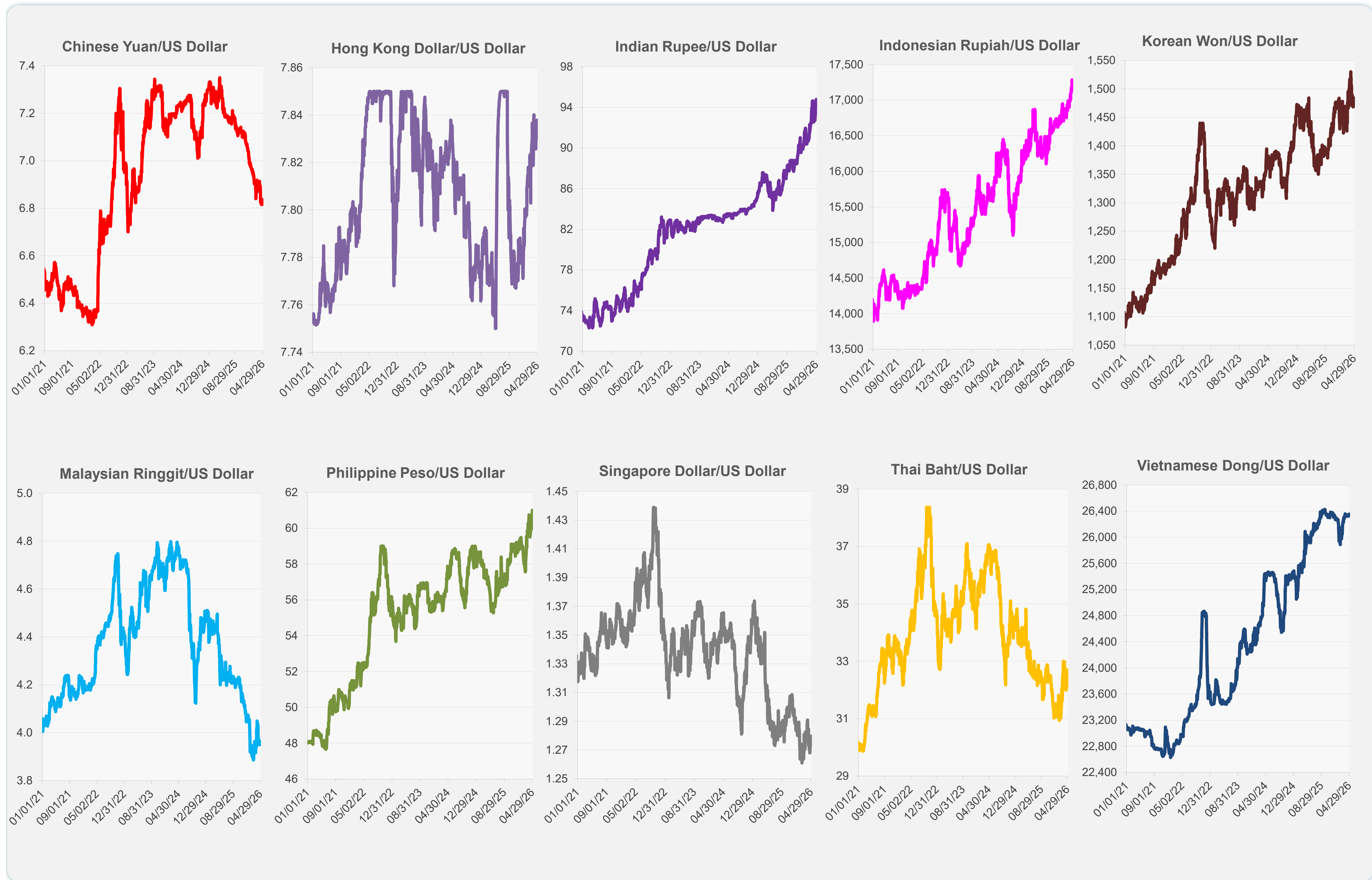
	Latest Closing	% change from Previous Day	% change from 01-Jan-26
Euro	0.85	-0.02	-0.38
Japanese yen (JPY)	159.53	0.00	-2.23
Bangladeshi taka (BDT)	123.10	-0.10	-0.69
Brunei dollar (BND)	1.28	-0.32	0.29
Chinese yuan (CNY)	6.83	0.05	2.27
Hong Kong dollar (HKD)	7.84	-0.01	-0.68
Indian rupee (INR)	94.79	-0.28	-5.07
Indonesian rupiah (IDR)	17,280.00	-0.38	-3.50
Korean won (KRW)	1,479.00	-0.37	-2.70
Malaysian ringgit (MYR)	3.95	0.01	2.70
Pakistan rupee (PKR)	278.77	0.01	0.48
Philippine peso (PHP)	61.00	-0.52	-3.60
Singapore dollar (SGD)	1.28	-0.18	0.50
Sri Lanka rupee (LKR)	319.61	-0.16	-3.13
Taipei,China NT dollar (TWD)	31.56	-0.12	-0.38
Thai baht (THB)	32.69	-0.54	-3.62
Vietnamese dong (VND)	26,356.00	-0.04	-0.21



NIE = Newly Industrialized Economies



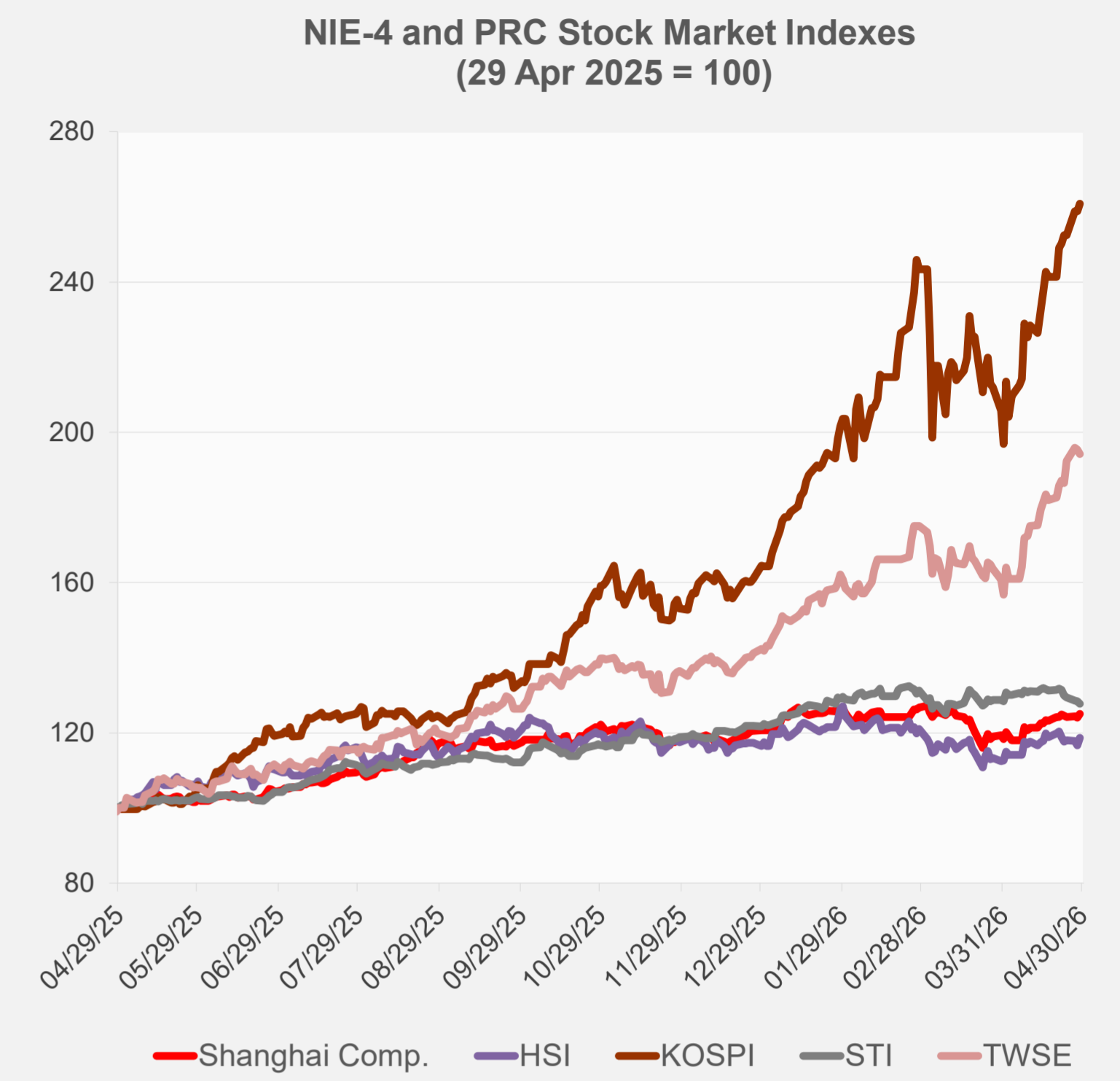
Note: Negative/Decreasing values indicate depreciation of local currency, and positive/increasing values indicate appreciation.
Source: ADB calculations using data from Bloomberg and Haver Analytics.



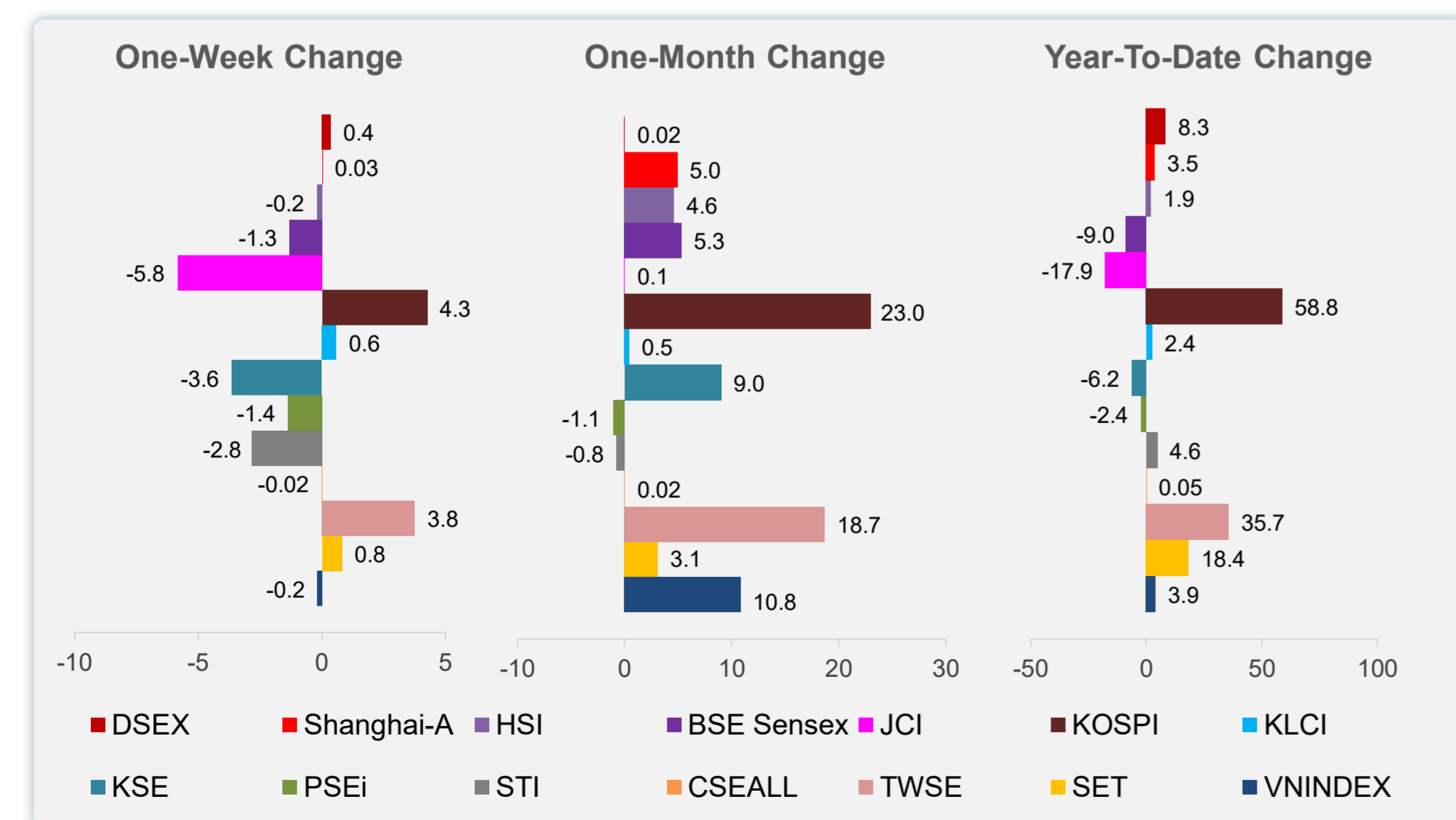
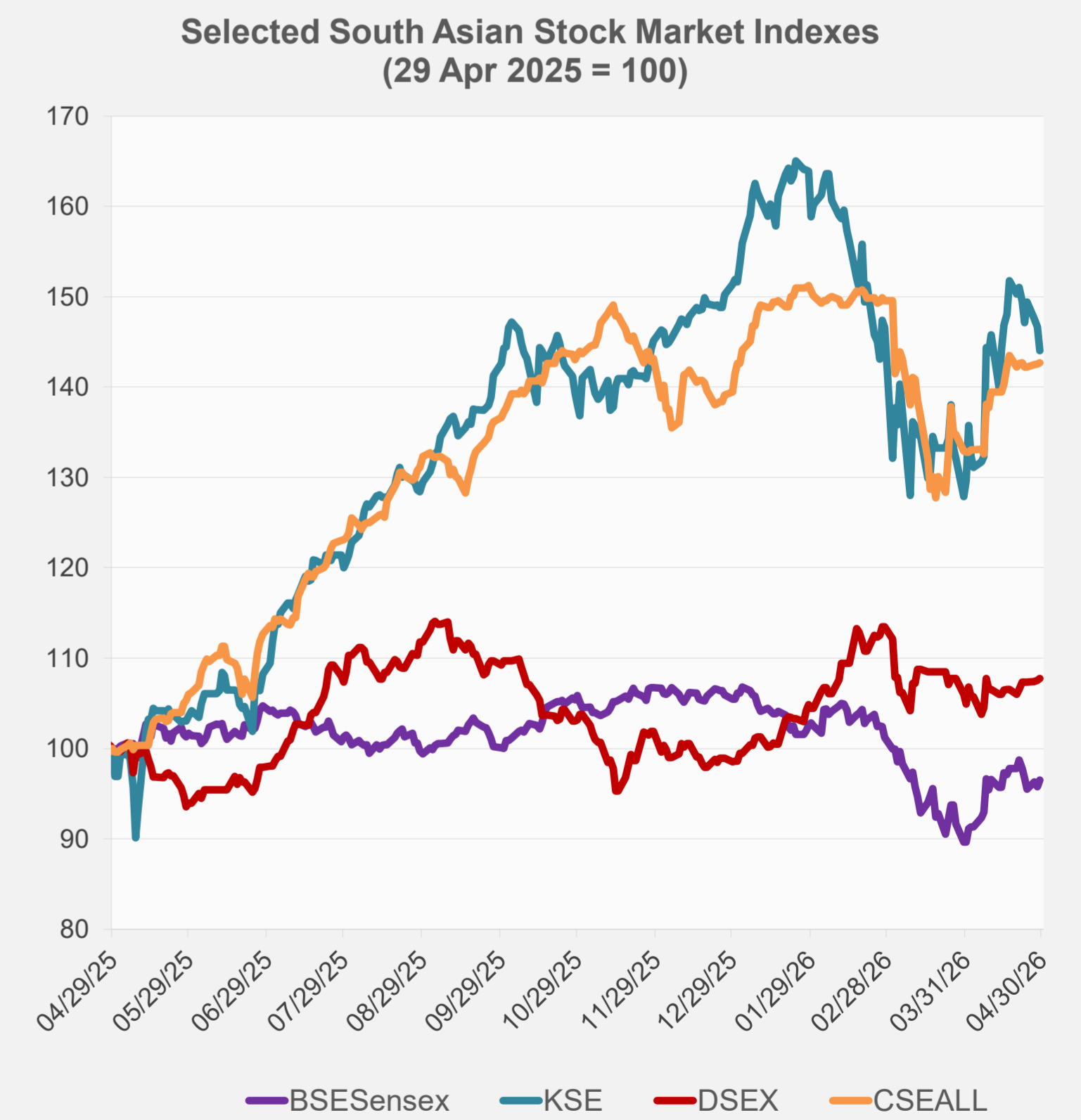
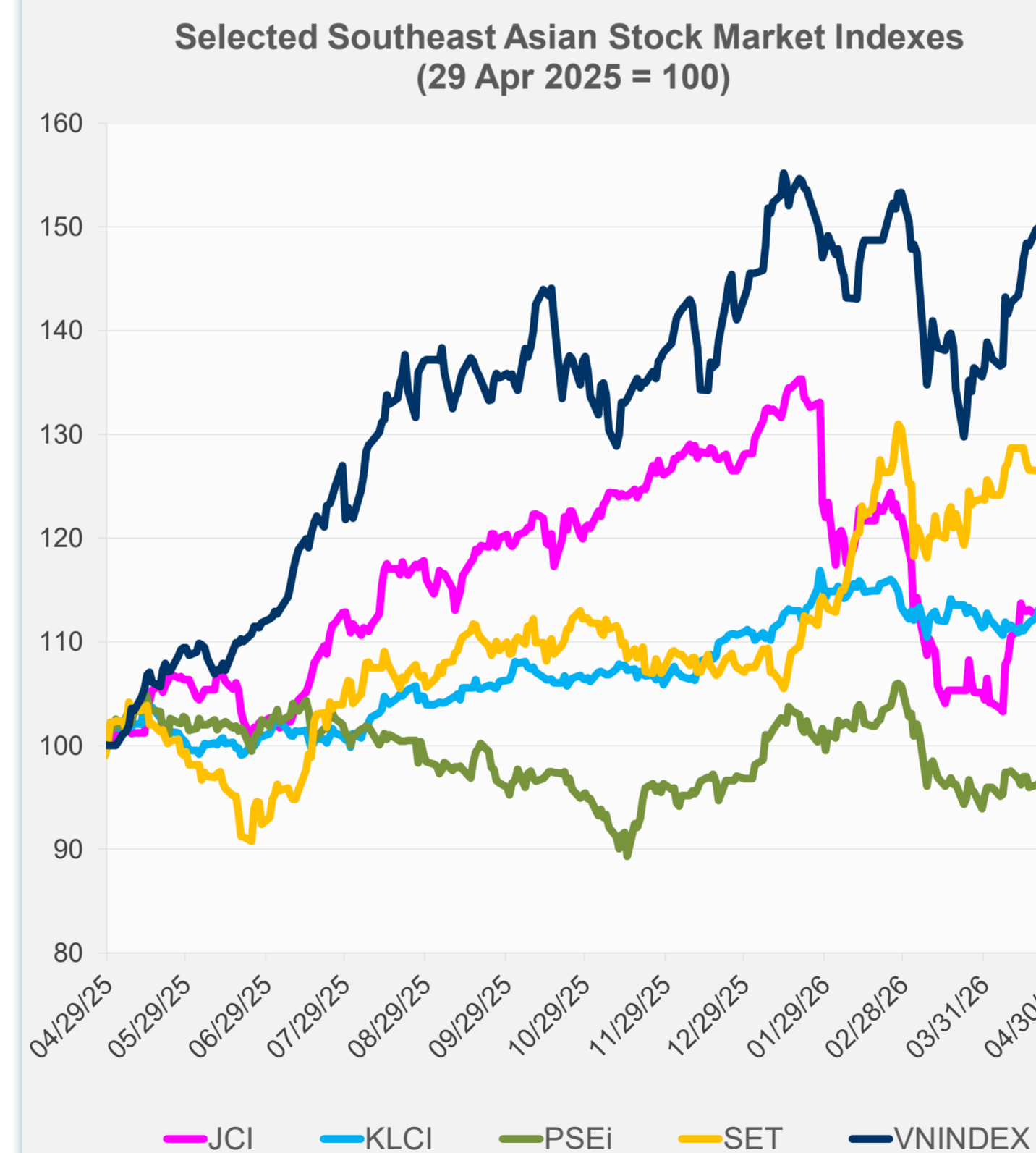
Source: Haver Analytics.

Daily Market Watch
STOCK INDEXES

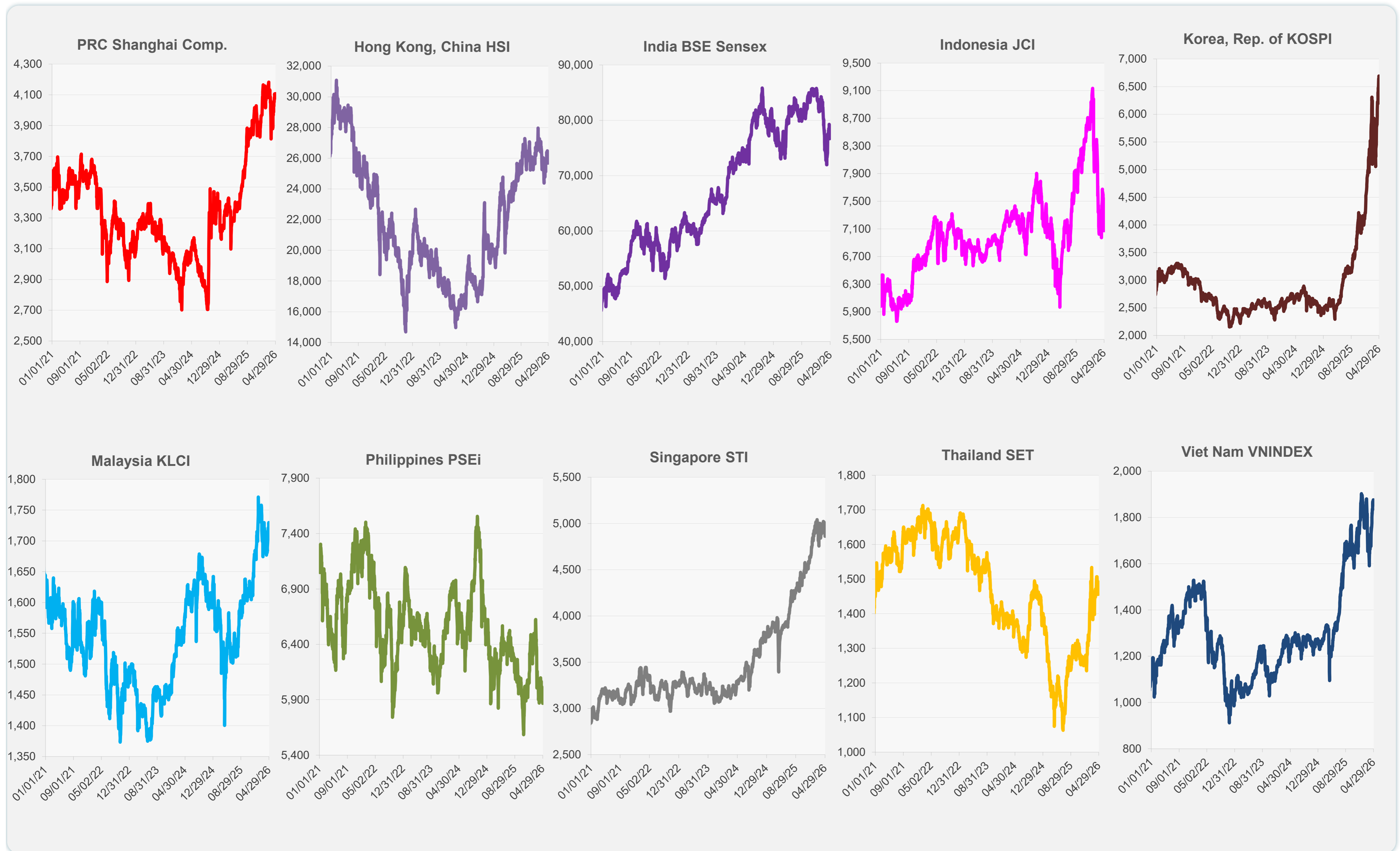
	Latest Closing	% change from Previous Day	% change from 01-Jan-26
US Dow Jones Ind Avg	48,861.81	-0.57	1.66
US NASDAQ	24,673.24	0.04	6.16
US S&P 500	7,135.95	-0.04	4.24
UK FTSE 100	14,311.19	-0.13	27.08
EURO STOXX 50	5,816.48	-0.34	0.43
Japan NIKKEI 225	59,917.46	0.00	19.03
Bangladesh DSEX	5,317.36	0.16	8.28
PRC Shanghai Comp.	4,107.51	0.71	3.49
Hong Kong, China HSI	26,111.84	1.68	1.88
India BSE Sensex	77,496.36	0.79	-9.03
Indonesia JCI	7,101.23	0.41	-17.88
Korea, Rep. of KOSPI	6,690.90	0.75	58.77
Malaysia KLCI	1,720.42	-0.53	2.40
Pakistan KSE 100	165,484.60	-1.75	-6.23
Philippines PSEi	5,907.89	0.70	-2.40
Singapore STI	4,860.97	-0.55	4.62
Sri Lanka CSEALL	22,635.00	0.07	0.05
Taipei, China TWSE	39,303.50	-0.55	35.70
Thailand SET	1,491.74	0.78	18.42
Viet Nam VNINDEX	1,854.10	-1.16	3.90



NIE = Newly Industrialized Economies



Sources: ADB calculations using data from Bloomberg and CEIC Data Company.

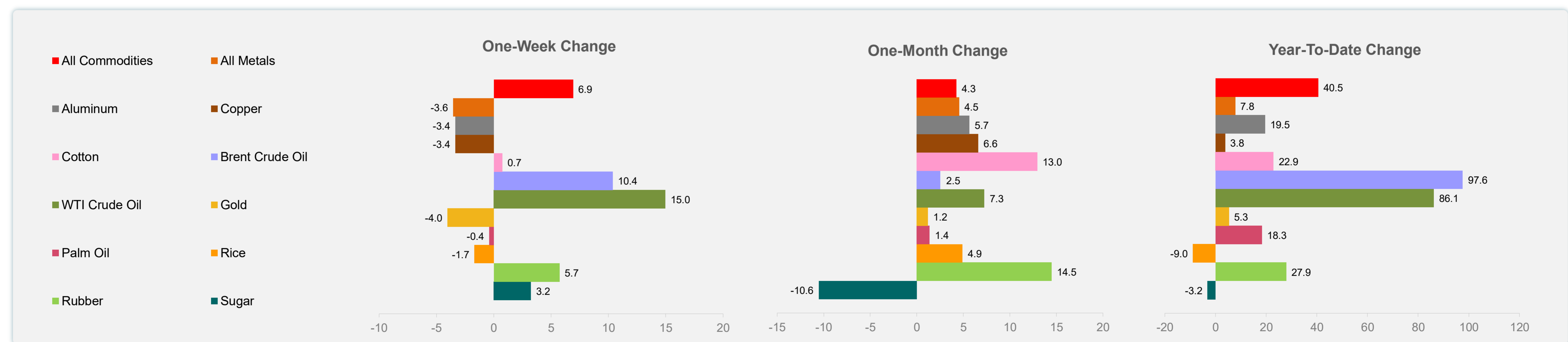
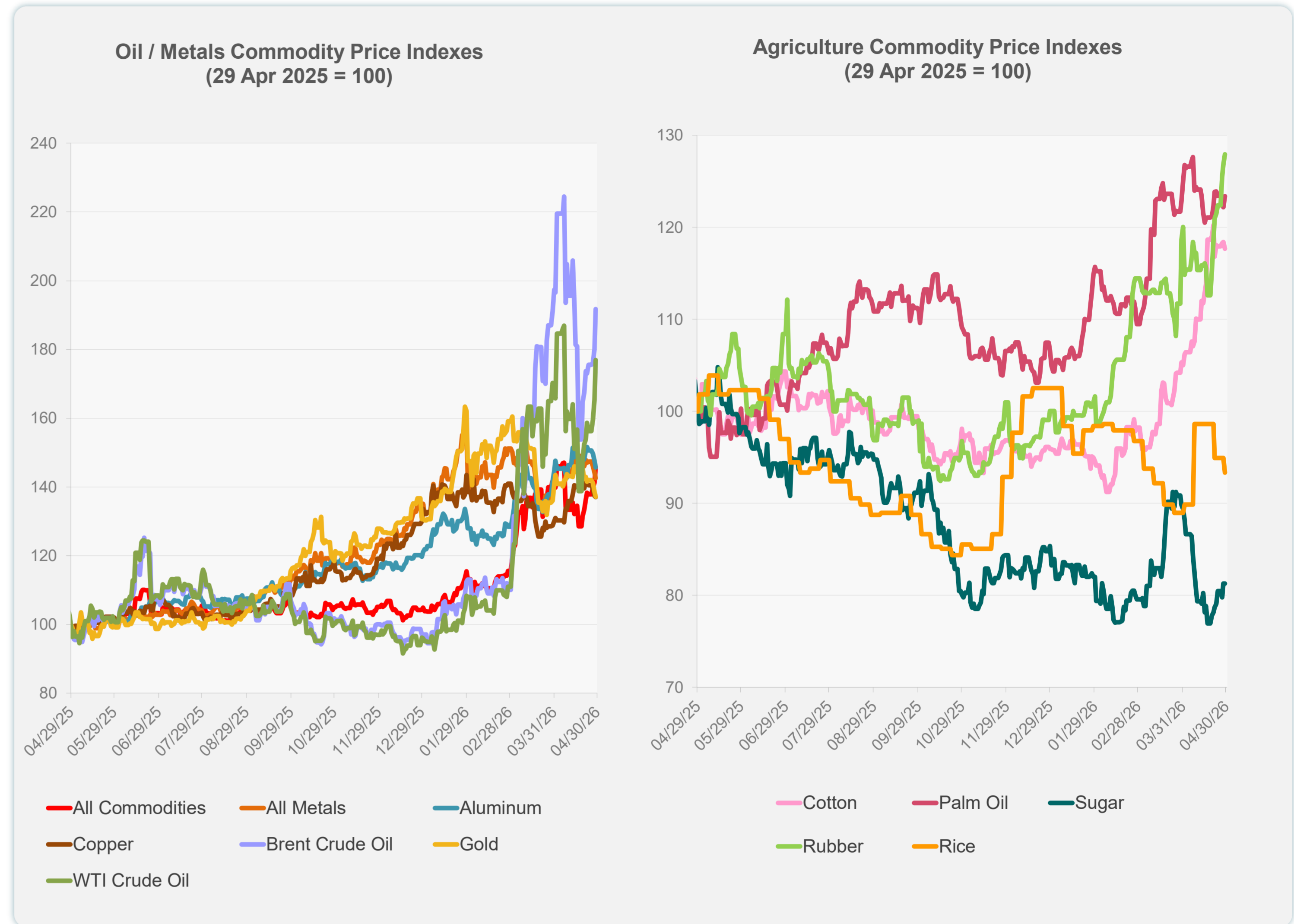


Sources: ADB calculations using data from Bloomberg and CEIC Data Company.

Daily Market Watch
COMMODITY PRICES

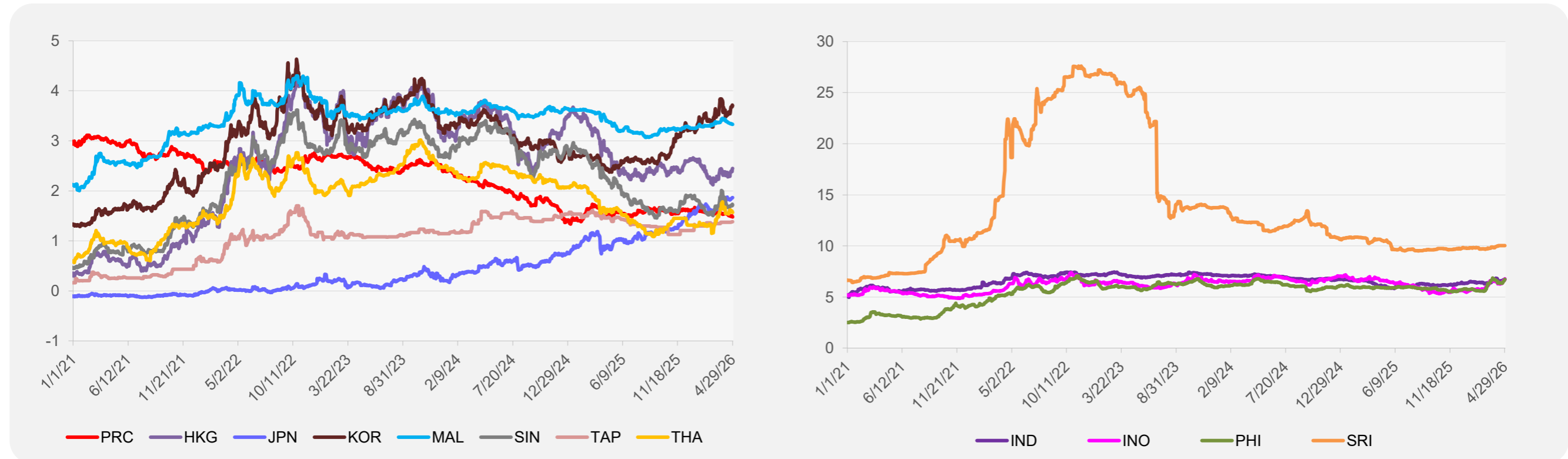
	Unit	Latest Closing	% change from Previous Day	% change from 01-Jan-26
S&P All Commodities	US\$	770.68	3.21	40.50
S&P All Metals	US\$	478.26	-1.13	7.77
Aluminum	US\$/metric ton	3,547.02	-1.33	19.51
Copper	US\$/metric ton	12,924.39	-0.21	3.78
Cotton	US cents/lb	76.20	-0.61	22.86
Brent Crude Oil	US\$/barrel	123.37	6.47	97.57
WTI Crude Oil	US\$/barrel	106.88	6.95	86.14
Gold	US\$/troy oz	4,547.95	-1.06	5.29
Palm Oil	US\$/metric tonne	1,145.55	0.98	18.26
Rice ¹	US\$/metric ton	406.00	-1.69	-8.97
Rubber ²	US\$/kg	274.90	0.88	27.86
Sugar	US cents/lb	14.32	0.00	-3.18

¹ Latest closing price from 22 April 2026.
² Singapore Exchange, Ribbed Smoked Sheet Rubber.

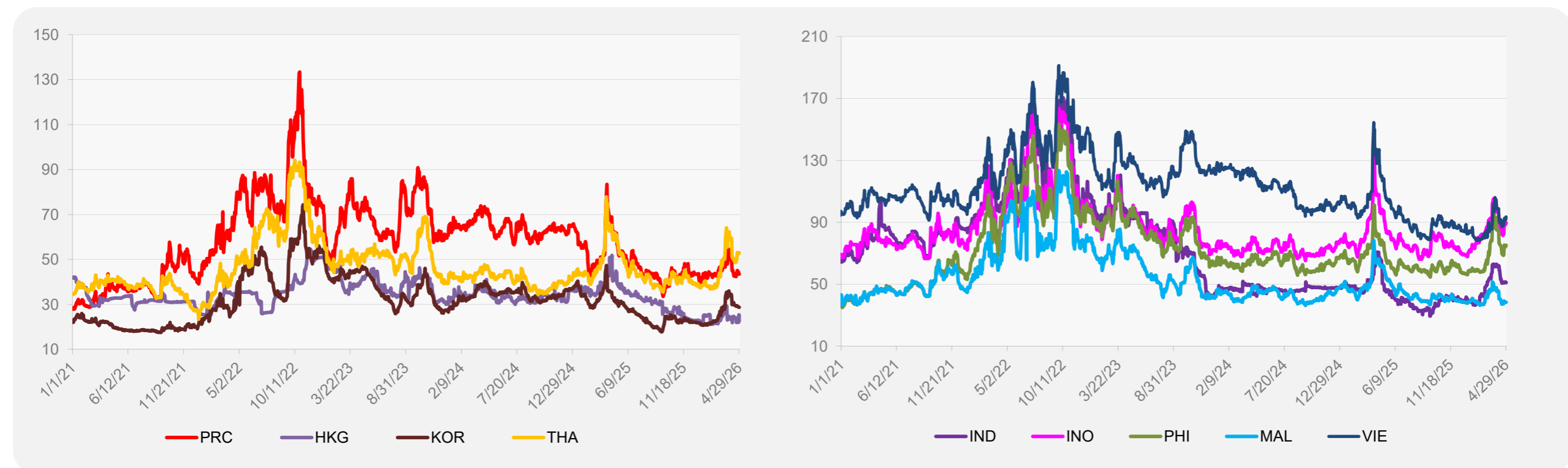


Source: ADB calculations using data from Bloomberg.

5-YEAR LOCAL CURRENCY GOVERNMENT BOND YIELDS (%)



5-YEAR CREDIT DEFAULT SWAP¹



¹ In USD and based on sovereign bonds.
Source: ADB calculations using data from Bloomberg.